

## High Resolution Piezo-jet Printer

# DJ340

Robust, advanced and reliable, satisfied with mostly of coding and marking need.

Automatic ink system design with quick prime, ink drainage and self-cleaning print head nozzle for 100% mess-free printing.

Capable of multi-type head connection, XJ128(17.5mm), XJ382(54mm) and 510BN(70mm) fittings.

Cost-efficient piezo-jet printer system for 100% maintenance-free printing.

CE compliant.



# Key Feature

01



Complete stand alone system, no PC required. Print message edited by 4.3" touch screen.

02

2 levels password protection.

03

External data printing via RS232 interface connection.

04

Flexible installation includes floor stand, conveyor and swing-arm.

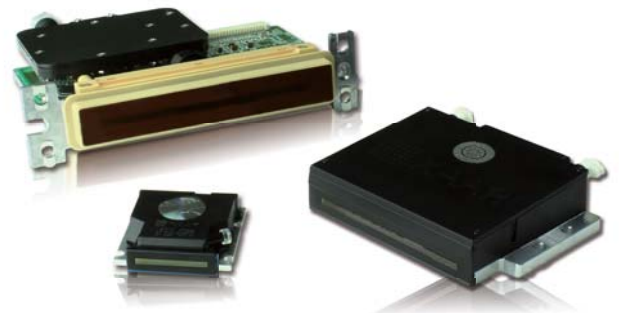
05



Security chip build into the ink cartridge to prevent incorrect ink usage.

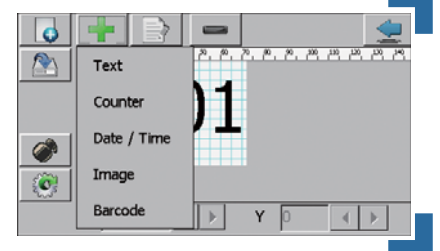
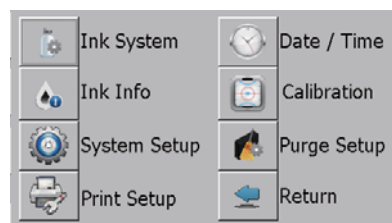
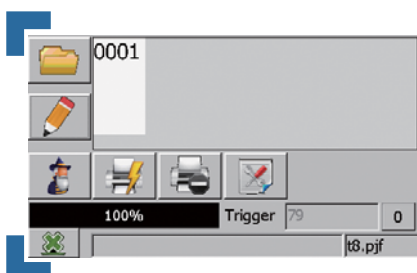
06

Umbilical print head connection for XJ128(17.5mm), XJ382(54mm) and 510BN(70mm).



07

User friendly operation software, quickly set up print message.



## Key Feature

08

With auto-prime and auto-drain design for a complete mess-free system.

09

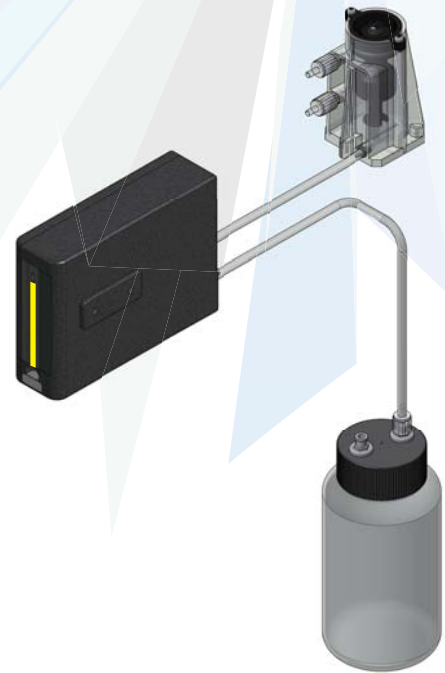
Print head automatically purges during each print break.

10

Bulk ink delivery system provides a good solution for higher ink consumption.

11

Automatically clean print head nozzle, minimize your maintenance.



12

Alternative PC software supplied for mass print message creation.



## Accessory

Available accessories include ink low alarm, encoder, print head swing-arm and UV curing lamp.



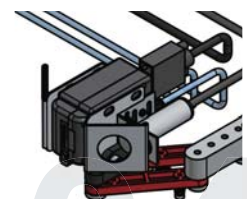
External Light Beacon



Encoder



UV Curing System



Swing-Arm

## Technical Details & Specification

### Piezo impulse printhead technology

Electrical Requirement	AC 90V ~240V, 50/60 HZ
Operating Temperature	5°C ~50°C (5°F - 122°F)
Vertical & Horizontal Resolution	185dpi / 200dpi (Optional angled head mounting provides a higher resolution of 360dpi)
Operation	4.3" LCD touch screen Capable of storing over 1,000 messages
Print Speed	Up to 98 feet/min(30m/minute) at 300dpi with 128 80pl print head Up to 197 feet/min(60m/minute) at 300dpi with 128 40pl print head Up to 164 feet/min(50m/minute) at 300dpi with 382 print head Up to 98 feet/min(30m/minute) at 300dpi with 510 80pl print head
Message Length	1.024mm
Orientation	Horizontal and Vertical printing
Distance to Print Surface	Maximum 6.5mm (0.25 inches) 1mm to 17.5mm (XJ128 print head)
Print Height	1mm to 54mm (XJ382 print head) 1mm to 70mm (SII 510BN print head)
Ink Usage	Porous, non-porous and UV curing inks
Ink supply	250ml ink cartridge. 500ml bulk ink supply is optional
Dimension (L/W/H)	160 x 450 x 140 (mm) / 6.3 x 17.7 x 5.5 (inches)

## Print capability & Software functions

- Support multi-text fonts
- Scalable text including rotation, mirror and inverse printing
- Automatic increment & decrementing batch counting
- Graphic format supported using 1 bit bitmap file (\*.bmp)
- Automatic time and date functions
- Automatic best-before date calculation
- Auto repeat printing
- Barcode printing function
- External data connectivity printing
- Ink running cost calculation per message

